

Inside

Employees Practice Safety.....2

GFCI Outlets.....3

Cookson Hills Pays Taxes to Schools.....4

Watt's Cooking.....4

October 2014

Hot Watts

Published monthly by Cookson Hills Electric Cooperative, Inc.

Your Touchstone Energy® Cooperative 



Energy Efficiency

Tip of the Month

Fall is here, and that means colder months will be here before we know it. Is your home prepared for the drafts that may enter? Tight-fitting insulating drapes or shades are a perfect way to keep the heat in and the cold out.

Source: U.S. Department of Energy

Congratulations!

Adam Pope is our online survey winner.

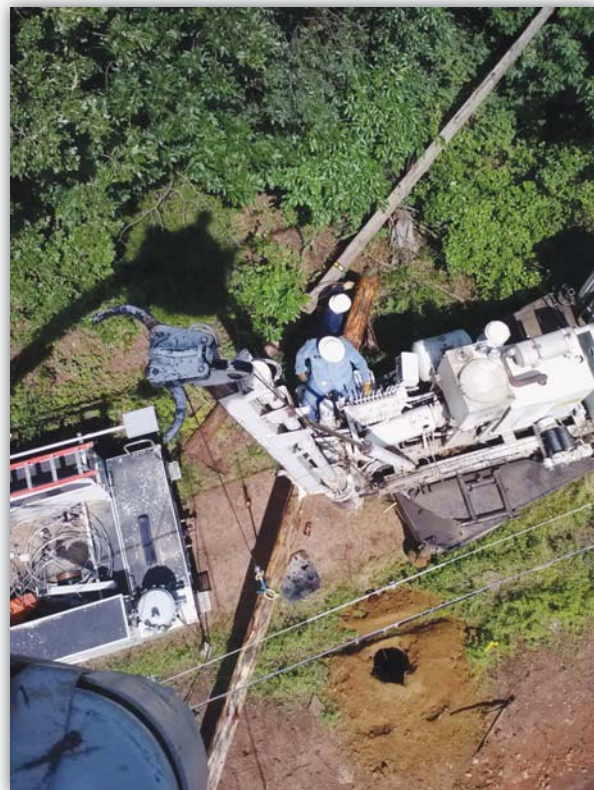
CHEC to Replace Poles in Sequoyah County

In our continued commitment to provide you with reliable service, Cookson Hills Electric Cooperative (CHEC) is in the process of replacing poles in the Nicut and Liberty substation areas in Sequoyah County.

CHEC contracted with Osmose Utilites Services, Inc., earlier this year to inspect and treat power poles owned by CHEC in the Nicut area. During the spring and summer, Osmose completed pole inspections of all poles on the Nicut substation and on half of the Liberty substation.

During the routine inspection each pole is inspected and tested, ensuring that each pole meets proper strength requirements. The poles that pass the strength requirements are treated to prevent future decay. Those that do not meet the proper strength requirements are scheduled for replacement.

CHEC construction crews began replacing the poles in July. CHEC has contracted with Gordon Construction of Stigler to replace a portion of the poles this fall.



CHEC crew replacing pole in the Nicut area
Photo taken by Jeremy Baker

OCTOBER IS NATIONAL CO-OP MONTH



COOKSON HILLS ELECTRIC COOPERATIVE'S 66TH ANNUAL MEETING

Saturday, October 4, 2014
Sallisaw High School Gymnasium

Registration opens at 10:00 a.m. Business Meeting begins at 11:00 a.m.
Prize drawings following business meeting

Entertainment provided by
The Ritter's Family Band

Cookson Hills Electric Cooperative, Inc.

Headquarters Office
PO Box 539 • 1002 E. Main
Stigler, OK 74462
800-328-2368

Branch Office
PO Box 587 • 1800 KOA/Power Drive
Sallisaw, OK 74955
918-775-2211

Pay-by-Phone: 1-888-678-1937
www.cooksonhills.com



BOARD OF TRUSTEES

William T. Mills, <i>President</i>	District 4
Joe Falleur, <i>Vice President</i>	District 3
Kenneth Kelley, <i>Sec.-Treas.</i>	District 5
Vacant	District 2
Rocky Woods, Sr., <i>Trustee</i>	District 1
Joe Ogle, <i>Trustee</i>	District 6
Ronnie Pevehouse, <i>Trustee</i>	District 7

STAFF

Kendall Beck, *General Manager*
 Eric Johnson, *Assistant General Manager*
 Dalen Garner, *Director of Operations*
 Brett Orme, *Director of Engineering*
 Juli Orme, *Chief Financial Officer*
 Amy Smith, *Manager of Accounting Services*
 Kristie Cash, *Manager of Office Services*

Bill V. Wilkinson - *Attorney*

Cookson Hills Electric Cooperative, Inc. welcomes members to submit photos, and articles which will be subject to editing. Cookson Hills reserves the right to publish or modify any article. Companies and individuals featured in the Hot Watts newsletter do not necessarily reflect the official policy, position, or view of Cookson Hills.

Donna Rhodes, *Editor*
E-Mail: drhodes@cooksonhills.com



If You Find Your Account Number
Hidden in This Issue of the *Hot Watts*
You'll Receive a \$25 Credit on
Your Electric Bill

Employees Practice Safety Procedures

CHEC linemen recently completed safety training in conjunction with the Safety and Loss Control staff from Oklahoma Association of Electric Cooperatives, Inc. (OAEC). The Safety and Loss Control staff provides training which emphasizes safe working practices for the well-being of rural electric employees, the membership, and the public.

Once a year, linemen undergo pole top and bucket truck rescue training. Pole top and bucket truck rescue is one of the skills in which a lineman must be proficient in order to be prepared for the unfortunate 1860900 situation of an accident involving another lineman. The task is to get an injured person to the ground quickly and safely.

Safety is of utmost importance at CHEC. We are committed to ensuring the safety of our employees, members, and the public.



Allen Hare performing pole top rescue

Photos by Donna Rhodes



Blu Cloud practices bucket truck rescue

At Left: David Bumpers and Ronnie Martin test new equipment

Are you grounded? GFCI outlets can help!

Did you know there are different types of electrical outlets? Each are designed for different purposes; however, there is one specific type that stands high above the rest—the ground-fault circuit interrupter (GFCI) outlet.

GFCIs are the most efficient outlet in protecting from electrical shock. If it senses a loss of current, the outlet switches off power to that circuit.

These devices can either be installed in your electrical system or built into a power cord. The third hole at the bottom of the outlet is known as the “ground” slot, which monitors electrical currents that flow through the left “neutral” slot and the right “hot” slot on each outlet.

A GFCI can react faster than a blink of an eye to any imbalance of power by immediately shutting off the electrical current. These outlets are now a requirement in all places where water could potentially come into contact with electrical products such as bathrooms, garages, outdoors and kitchens. GFCIs are not exclusive to three-prong outlets. They can be installed into



standard outlets, and there are even portable devices available when installation is not practical.

GFCIs should be tested at least once a month to ensure they are working effectively. The first step you need to take is to test an item, such as a lamp, that visibly powers on when plugged in. Push the “reset” button to prepare the outlet then push the “test” button. Did your lamp turn off? If it did, the GFCI is working properly. Now, hit the “reset” button once again to power it back on. If your lamp did not power off, then you should contact a certified electrician to correct the problem.

Next time you have a free moment, take the time to look around your house. If you’re not “grounded,” consider updating your electrical outlets to GFCIs.

Sources: Electrical Safety Foundation International, Consumer Product Safety Commission

Amber Bentley writes on energy efficiency issues for the National Rural Electric Cooperative Association, the Arlington, Va.-based service arm of the nation’s 900-plus consumer-owned, not-for-profit electric cooperatives.

Reminder:

Keeping your account information up-to-date is important to you as well as CHEC.

The most common inaccurate account information is phone numbers. CHEC periodically calls members to notify you of a controlled outage, billing information, and other important information. If your phone number changed, you disconnected your home phone, or have a new cell phone, please contact us.

Please take the time to update your account information by visiting our website at www.cooksonhills.com or contact your local office at 800-328-2368 (Stigler), or at 918-775-2211 (Sallisaw).



CHEC Supports Local Schools

CHEC believes strongly in education and believes in supporting the local school districts within our service territory. One of the ways we contribute financially is through our payment of gross receipts taxes.

CHEC pays a gross receipts tax equal to 2% of the total gross revenue to the Oklahoma Tax Commission. Ninety-five percent of the tax paid is distributed by the tax commission to area schools. Each school receives an amount determined by the miles of electric 3041600 line within its district. The chart, to the right of this page, provides a breakdown of the distributions of the 2013-2014 taxes paid by CHEC per school district.

For the 2013-2014 fiscal year, CHEC paid \$583,049.86 on 2,853 miles of line to 23 school districts in its seven county territory.

Tax Allocation to Local Schools

School District	Taxes Paid
Belfonte	\$11,396.69
Bokoshe	\$ 150.11
Brushy	\$13,348.97
Central	\$25,428.05
Gans	\$23,885.81
Gore	\$47,293.46
Keota	\$45,352.52
Kinta	\$34,169.38
Liberty	\$ 8,828.80
Marble City	\$12,553.46
McCurtain	\$23,838.28
Moffett	\$ 475.86
Muldrow	\$44,198.05
Porum	\$27,733.63
Quinton	\$12,218.27
Roland	\$15,819.21
Sallisaw	\$58,084.47
Stigler	\$80,006.59
Vian	\$58,208.45
Warner	\$12,247.46
Webbers Falls	\$17,153.64
Whitefield	\$10,432.49
Wilburton	\$ 226.21

Total \$583,049.86



WATT'S COOKING?

Apple Dumplings My Way

by Sonya Bryant

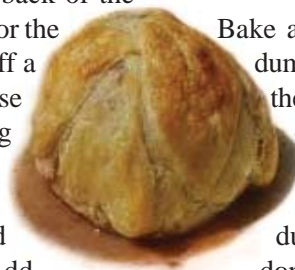
Place 4 cups of apple juice, ½ cup of sugar and 2 teaspoons of cinnamon in a pan. Bring to a boil, then reduce heat and simmer. Set aside.

Prepare biscuit dough from the recipe on the back of the self-rising flour package. Doubling the recipe for the dough will make six large dumplings. Pinch off a portion of the dough about the size you would use for a large biscuit. Knead and roll each dumpling on a floured board.

Place the dumplings in a 9 X 12 pan. Peel and thinly slice an apple on each piece of dough. Add

- | | |
|--------------------|----------------------|
| 4 cups apple juice | Dough: |
| Sugar | Self-rising flour |
| Cinnamon | Buttermilk or milk |
| 6 Apples | Pinch of baking soda |
| Butter | |

sugar, a pat of butter and sprinkle cinnamon on each one. The amount of sugar will depend on how tart the apples are. Fold dough over the top of the apples; place another pat of butter on top and sprinkle with sugar.



Bake at 400 degrees for about 20 minutes. Remove dumplings from oven and pour the juice mixture over the dumplings, making sure there is enough juice to cover them well. Reduce the heat to 350 degrees and bake until golden brown approximately 25 minutes. To test for doneness, insert knife into dumpling, and if the knife goes in easily, they are done.

If you have a recipe you would like to share, please email it to drhodes@cooksonhills.com. You may also drop it off or mail it to one of our offices.