

## Inside

Member Satisfaction  
Survey.....2

Inefficient  
Incandescent.....2

Co-op Connections  
Card.....3

Scholarship  
Application.....4

February 2013

# Hot Watts

PUBLISHED BY COOKSON HILLS ELECTRIC COOPERATIVE, INC.

Your Touchstone Energy® Cooperative 



Energy Efficiency

### Tip of the Month

Your heat pump can use 10 percent to 25 percent more energy if it's not properly maintained, which includes regularly checking and replacing the air filter when it's dirty to keep parts from working too hard or even becoming damaged. Keep brush and plants tidy around the outdoor unit, and dust the return registers inside.

Source: U.S.  
Department of Energy

**Congratulations**  
Gary Hall  
is our online survey  
winner!



## Temporary Stigler Office has Drive-Thru Lane and New Office Entrance

Main Street in Stigler now looks different with the removal of Cookson Hills Electric Cooperative's headquarters building. But it is business as usual in the new temporary offices that are located at the south end of the warehouse.

Added for your convenience, the new drive-thru lane is accessible from SE 10th Street. The lobby entrance is now located on the southeast corner of the building, with customer parking accessible from SE 10th Street as well. Signs have been installed to assist our customers in locating the drive-thru and lobby entrance.

We appreciate your patience as we transition through construction. If you have any questions, please feel free to call our Stigler office at 918-967-4614.



Photo by: Larry Mattes

## Cookson Hills to Offer College Scholarship

Area high school seniors, whose parent or guardian is a member of Cookson Hills Electric Cooperative (CHEC), have an opportunity to apply for a \$500 scholarship. Each year the Herman Driscoll Memorial Scholarship committee awards four scholarships to help deserving seniors pay for college or technical school.

To be eligible for consideration, students must have a GPA of 2.0 or better, good character, good citizenship, financial need and a desire to further their education. Additionally, seniors must enroll as a full-time student at a college or technical school.

High school seniors may complete the application on page four of this Hot Watts issue or obtain an application from the CHEC website ([www.cooksonhills.com](http://www.cooksonhills.com)).

Please return your application, along with two letters of recommendation, by **April 5, 2013** to the following address:

Scholarship Committee  
Cookson Hills Electric Cooperative  
P.O. Box 539  
Stigler, OK 74462



### Hot Watts

is published monthly by Cookson Hills Electric Cooperative, Inc. *Hot Watts* informs members in parts of seven Eastern Oklahoma counties about Cookson Hills' programs and issues. Cookson Hills Electric Cooperative continually strives to provide quality electrical service at a reasonable cost for its members.

**Headquarters:** P.O. Box 539  
Stigler, OK 74462  
Phone: 918-967-4614

**Branch Office:** P.O. Box 587  
Sallisaw, OK 74955  
Phone: 918-775-2211

**Toll-Free: 1-800-328-2368**

**Home Page:** [www.cooksonhills.com](http://www.cooksonhills.com)  
**E-Mail:** [marketing@cooksonhills.com](mailto:marketing@cooksonhills.com)

#### Cookson Hills Staff

Kendall Beck  
General Manager

Eric Johnson  
Assistant General Manager

Dalen Garner  
Director of Operations

Brett Orme  
Director of Engineering

Juli Orme  
Chief Financial Officer

Amy Smith  
Manager of Accounting Services

Kristie Cash  
Manager of Office Services

#### Cookson Hills Board of Trustees

William T. Mills ..... President / District 4  
Joe Falleur ..... Vice President / District 3  
Kenneth Kelley ..... Sec.-Treas. / District 5  
William R. Wilson ..... Trustee / District 2  
Rocky Woods, Sr. .... Trustee / District 1  
Joe Ogle ..... Trustee / District 6  
Ronnie Pevehouse..... Trustee / District 7

Bill V. Wilkinson - Attorney

Larry Mattes - Editor

Cookson Hills welcomes members to submit photos, and articles which will be subject to Cookson Hills editing. Any submissions must be received before the 12th of the month prior to the publication date.

**If You Find Your Account Number Hidden in This Issue of the *Hot Watts* You'll Receive a \$25 Credit on Your Electric Bill**

# 2013 Member Satisfaction Triennial Survey

## Members' Opinions Help Better Cooperative

Beginning in February, Cookson Hills Electric Cooperative (CHEC) will be participating in a telephone survey that is conducted every three years to measure the quality of service provided to you, our members. This survey will ask several questions about your energy usage and your satisfaction with the cooperative. It should take approximately 15 minutes to answer all questions.

TSE Services, a professional call center conducting the survey, will identify themselves as calling on behalf of Cookson Hills Electric Cooperative. They will be conducting 250 telephone

calls Monday through Friday from 4:00 p.m. until 9:00 p.m. and on Saturday from 10:00 a.m. to 5:00 p.m.

The purpose of the survey is to receive input from members to guide the board and management in their decision-making. Members will be asked questions on a wide variety of topics. The survey results will be presented to the board this spring.

CHEC extends a big "THANK YOU" to all of our members who will take the time to participate in the telephone survey. We truly appreciate your interest in helping us meet your service needs.

## Department of Energy "inefficient incandescent" phase out continues

New federal efficiency standards that require light bulbs to be more efficient and consume less electricity took effect Jan. 1, 2013. You can add the standard 75-watt incandescent bulb to the list of bulbs that will no longer be available in most stores. Traditional 40- and 60-watt incandescent bulbs will be phased out January 2014.

The Department of Energy (DOE) is encouraging consumers to start buying light bulbs by their lumens


output - how brightly a bulb burns, not by what it consumes in watts. Most of the quality manufacturers are already putting a "lighting facts" label on their packaging that lists the lumens output.

According to the DOE website, when replacing a 100-watt incandescent bulb, look for a bulb that

produces about 1,600 lumens; replace a 75-watt bulb with 1,100 lumens; a 60-watt with 800 lumens; and a 40-watt bulb with about 450 lumens.

Members will still want to check the package for total wattage, however, as not to exceed recommended wattage levels for the fixture they are putting the bulb in. Not all bulbs are created equal, so look for the ENERGY STAR label to ensure you are 34801 buying a quality bulb with a long life.



| Lighting Facts Per Bulb  |   |
|--|---|
| <b>Brightness</b>  | <b>800 lumens</b>   |
| <b>Estimated Yearly Energy Cost</b> <b>\$1.57</b><br><small>Based on 3 hrs/day, 11 c/kWh<br/>Cost depends on rates and use</small>   |  |
| <b>Life</b><br><small>Based on 3 hrs/day</small>   | <b>9 years</b>  |
| <b>Light Appearance</b><br>Warm <span style="display: inline-block; width: 100px; border-bottom: 1px solid black; position: relative; top: -5px;"><span style="position: absolute; left: 0; top: -5px;">2700 K</span><span style="position: absolute; right: 0; top: -5px;">Cool</span></span> |   |
| <b>Energy Used</b>   | <b>13 watts</b>   |



# This Valentine's Day

## ■ Use your Co-op Connections Card for Savings at Participating Businesses

Local businesses offer discounts on goods and services when you show them your Co-op Connections Card. A few of our local partners are highlighted below. For a complete list of local discounts, as well as state and national deals, please visit our website at [www.cooksonhills.com](http://www.cooksonhills.com) and click on the "Co-op Connections Card."

### ◆ Anne-Paige Gift Boutique

105 N. Main, Gore

918-489-5854

*One FREE Trapp Private Gardens Candle with a \$50 purchase*

### ◆ Eclectic Imports

105 E. Ray Fine Blvd. Suite F, Roland

918-427-2288

*5% to 25% off anything in shop with Co-op Connections Card*

### ◆ Maddy's Floral & Gifts

1001 North Main Street, Gore

918-489-5802

*\$5 off a \$30 purchase or more*

### ◆ The Flower Cottage

200 E. Cherokee, Sallisaw

918-775-9555

*10% off any purchase*

### ◆ Mimi's Flowers

117 East Main Street, Stigler

918-967-2166

*\$5 gift card with purchase of \$50 or more*

### ◆ Sando's Flowers & Gifts

707 Roland Road, Roland

918-427-6222

*10% off purchase of \$25 or more*

### ◆ Stigler Flower Box

119 N. Broadway, Stigler

918-967-0100

*10% discount on cash and carry purchase*

### ◆ Violet's Flowers & Gifts

1900 E. Cherokee, Sallisaw

918-790-3304

*10% off any purchase*

### ◆ The Green House

2310 W. Cherokee, Sallisaw

918-775-0572

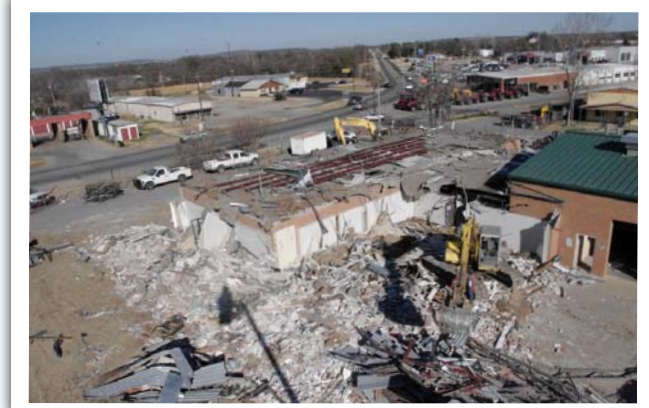
*10% off cash and carry purchases over \$25*



## Demolition of Stigler Headquarters Building



Photos by: Mark Blaylock



## Keep Your Account Phone Number Up-to-date

Please help Cookson Hills Electric Cooperative keep your account information up-to-date.

Our goal is to provide the best customer service we can. If we need to contact you about your account or if there is a power outage, we need your current phone number. Periodically we send a broadcast phone message with important service information. Sometimes events beyond our control such as automobile accidents, lightning storms, freezing rain, or other occurrences of nature take place. Without your current phone number, we have no way of contacting you to notify you of a problem with your service.

Please help us by providing your home and/or cell phone number. Call our customer service employees at 918-967-4614 or toll-free at 800-328-2368. You may also use our convenient update phone number form on our website at [www.cooksonhills.com](http://www.cooksonhills.com).



## Application for the Herman Driscoll Memorial Scholarship

Name \_\_\_\_\_

Social Security # \_\_\_\_\_ Telephone # \_\_\_\_\_

Address \_\_\_\_\_

City \_\_\_\_\_ State \_\_\_\_\_ Zip Code \_\_\_\_\_

Parents' (guardians') name(s) \_\_\_\_\_

Number of children at home or in college \_\_\_\_\_

Family income last year (check one):  Below \$35,000

Above \$35,000

GPA Score \_\_\_\_\_ ACT Score \_\_\_\_\_

Currently attending school at \_\_\_\_\_

List your involvement in school, community and vocational groups. Also include any work experience:

\_\_\_\_\_  
\_\_\_\_\_  
\_\_\_\_\_

In 75-100 words tell why you are applying for the scholarship and share your goals and ambitions:

\_\_\_\_\_  
\_\_\_\_\_  
\_\_\_\_\_  
\_\_\_\_\_  
\_\_\_\_\_  
\_\_\_\_\_  
\_\_\_\_\_  
\_\_\_\_\_  
\_\_\_\_\_  
\_\_\_\_\_

List scholarships you have earned and their value: \_\_\_\_\_

\_\_\_\_\_  
\_\_\_\_\_

Choice of Schools: \_\_\_\_\_

**Note: Please attach two letters of recommendation.**